

BETARD WSF WORLD MASTERS CHAMPIONSHIP 2022

21-27 August 2022
Wroclaw, Poland

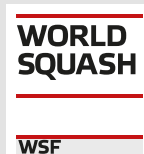
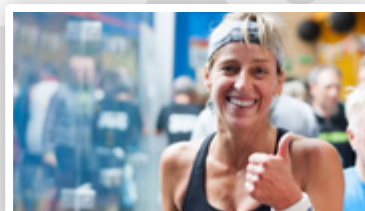
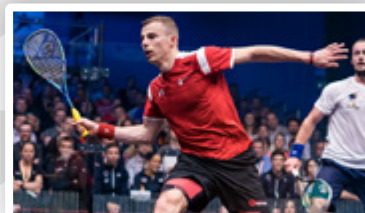


TABLE OF CONTENTS

WSF PRESIDENT'S WELCOME	3
CHAMPIONSHIP INFORMATION	3
1. WSF CHAMPIONSHIP EVENTS.....	4
2. WSF CHAMPIONSHIP EVENT FORMAT	5
3. WSF CHAMPIONSHIP SEEDINGS	6
4. CHAMPIONSHIP SCHEDULE	7
5. WSF PLAYING REGULATIONS	8
6. WSF OFFICIAL BALL.....	8
7. REFEREEING.....	9
8. WSF CHAMPIONSHIP SQUASH VENUE	9
9. WSF PLAYER REGISTRATION	10
10. CHAMPIONSHIP ACCOMMODATION.....	11
11. CHAMPIONSHIP FUNCTIONS	12
12. CHAMPIONSHIP TRANSPORTATION.....	15
13. CHAMPIONSHIP PRACTICE COURTS	16
14. CHAMPIONSHIP WEBSITE	16
15. CHAMPIONSHIP ENTRY FEES.....	17
16. CHAMPIONSHIP ENTRY PROCEDURE.....	18
17. PLAYERS RESPONSIBILITIES	19
18. DECLARATION	19
19. ANTI-DOPING – PRESCRIBED MEDICINE	20





BETARD WSF World Masters Championships

Championship Information

21-27 August 2022 Wroclaw, Poland



WSF PRESIDENT'S WELCOME

Welcome to the 2022 BETARD WSF World Masters' Championships in the historic Polish city of Wroclaw and the largest club in the world in Hasta La Vista. Having participated in 3 World Masters' Championships and been part of the organising team in 2012, I'm aware what a special event this is in bringing our global masters squash community back together to compete and renew friendships. Hasta La Vista will be an exceptional venue in hosting the whole event under the same roof. I'm sure the atmosphere will be awesome.

This event in Wroclaw has endured a long wait due to the impact of Covid and we extend our warmest thanks to colleagues at the Polish Federation and Hasta La Vista for their patience and support in organising this years' Championship; and to members of WSF's Masters' Commission for their continued guidance and leadership. Thank you also to players, referees, volunteers and sponsors for supporting the Championships and making it the special and unique event it is.

Wish you all every success on court, renewed and new friendships, and an enjoyable and memorable stay in the warm hospitality of our hosts in Wroclaw.

Yours in Sport,

Zena Wooldridge OBE
President, World Squash Federation

CHAMPIONSHIP INFORMATION

The BETARD WSF World Masters Championships will be conducted under the World Squash Federation (WSF) World Championship Regulations.

1. WSF CHAMPIONSHIP EVENTS

The following age category events will be run for Men and Women, subject to the Regulations below:

Men	Women
35 – 39 years	35 – 39 years
40 – 44 years	40 – 44 years
45 – 49 years	45 – 49 years
50 – 54 years	50 – 54 years
55 – 59 years	55 – 59 years
60 – 64 years	60 – 64 years
65 – 69 years	65 – 69 years
70 – 74 years	70 – 74 years
75 – 79 years	75 + years
80 + years	

- **Players** must have reached the minimum age of their category by the start date of the Championships, namely 21 August 2022.
- **Players** may enter only one age group category – the one applicable to their actual age.
- **Players** must email their passport or identity document to WSF at championships@worldsquash.org in advance to confirm their date of birth.
- **Players** must be available to compete on all days of the Championship, in main draw and plate events.
- **Players** must have an active SPIN.
- **Entry** for all age categories will close at 23:59GMT on Sunday 10 July 2022.

2. WSF CHAMPIONSHIP EVENT FORMAT

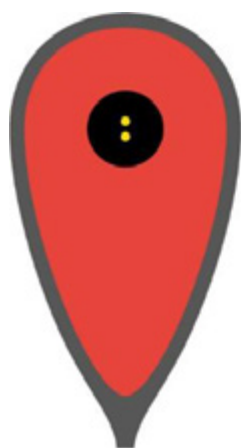
- **Entry Numbers:** Players in both men's and women's categories that have over 64 entries may be required to play 2 matches in early rounds.
- **Number of Matches:** In order to give everyone as many matches as possible, draws with a small number of players may be organized in a round robin format. Round Robin draws may require players to play two matches on any given day.
- **Minimum Number of Matches:** It is intended to offer every entrant a minimum of 3 matches if possible. However, it is planned to use plates, consolation plates, classic plates and MONRAD formatted play-off matches to provide the majority of players with even more matches if possible. (Please note that walkover results will be treated as actual matches played).
- **Finishing Positions:** Players that reach the last 8 in age categories with more than 32 entries will play out for a finishing position 1-8 and will be involved in match play through to the very last day of the competition.

Players that reach the last 16 in age categories with more than 64 entries will play out for a finishing position of 1-16 and will be involved through to the last day of competition.

- **World Championship Status:** For an event to be considered a World Championship there must be a minimum of 4 players from a minimum of two different Member National Federations at the entry deadline
- **Players Commitment:** A player who enters the Championships is expected to complete all scheduled matches and compete in all eligible plate draws and play-off matches. Players should commit to compete for the full duration of the Championships.
- **Prize Money:** No prize money is offered for any of the events.

3. WSF CHAMPIONSHIP SEEDINGS

- The Seeding of all events will be done by the WSF Masters Seeding Panel convened under the auspices of the WSF Masters Commission for the Championship.
- It is **important** that all entrants provide relevant information on playing standard and previous results when completing their entry, to assist with seeding.



WSF MASTERS TOUR



4. CHAMPIONSHIP SCHEDULE

DATE	REGISTRATION OPEN	PRACTICE COURTS	EVENT / FUNCTION
Friday 19 August	8:00hrs – 20:00hrs	15 Courts available – 08:00hrs – 20:00hrs +	
Saturday 20 August	08:00hrs – 20:00hrs	15 Courts available – 08:00hrs – 20:00hrs +	Function 1: Meet and Greet Welcome Reception 18:00hrs – 22:00hrs Hasta La Vista
Sunday 21 August	08:00hrs – 20:00hrs	08:00hrs – 09:30hrs *	Day 1 of Play – 10:00hrs – 17:30hrs Function 2: Opening Ceremony 19:00hrs – 23:00/24:00hrs
Monday 22 August		08:00hrs – 09:30hrs *	Day 2 of Play – 10:00hrs – 20:00hrs
Tuesday 23 August		08:00hrs – 09:30hrs *	Day 3 of Play – 10:00hrs – 20:00hrs
Wednesday 24 August		08:00hrs – 09:30hrs *	Day 4 of Play – 10:00hrs – 20:00hrs Function 3: „Players Party” 20:00hrs – 03:00hrs
Thursday 25 August		08:00hrs – 09:30hrs *	Day 5 of Play – (Quarter Finals) 10:00hrs – 17:30hrs
Friday 26 August		08:00hrs – 09:30hrs *	Day 6 of Play – (Semi Finals) 10:00hrs – 20:00hrs
Saturday 27 August		08:00hrs – 09:30hrs *	Day 7 of Play – (Finals) 10:00hrs – 17:30hrs Function 4: Closing Ceremony 20:00hrs – 03:00hrs

+ Plus evening courts if not pre-booked by centre users

* Championship courts = courts used in a particular day to play out the event matches. These Courts can also be used for practice in the evening if not pre-booked by centre users or during the day if not being used for Championship matches

5. WSF PLAYING REGULATIONS

- All matches are to be played in accordance with the WSF's Rules of Squash and WSF World Championship Regulations.
- Point-A-Rally scoring to 11 will apply to all men's and women's age category events.
- 19" tins will be used for all events.
- All players must report to the Championship Office 30 minutes prior to the scheduled start time of every match.
- A player may be disqualified, and the match awarded to the opponent if he or she arrives 10 minutes or more after the scheduled start time or after the court becomes available, if later.
- All players must wear appropriate squash clothing and non-marking shoes which conforms to WSF regulations.

6. WSF OFFICIAL BALL

The WSF official ball – Dunlop Double Yellow Dot will be used for all matches.



7. REFEREEING

- As many as possible officially qualified referees will be present throughout the Championships. However, all players are very likely to be required to mark/referee throughout the seven days of play. On completion of a match, unless told otherwise by Championship officials, the two players should always presume that they are required to referee/mark the next match on their court. The Championship policy is that the winner will referee and the loser will mark.
- Failure to make yourself available to mark/referee the next match could result in you being disqualified from the next round of the Championship.

All matches in the main draw, from the quarter-finals onwards, will be officiated by a qualified referee.

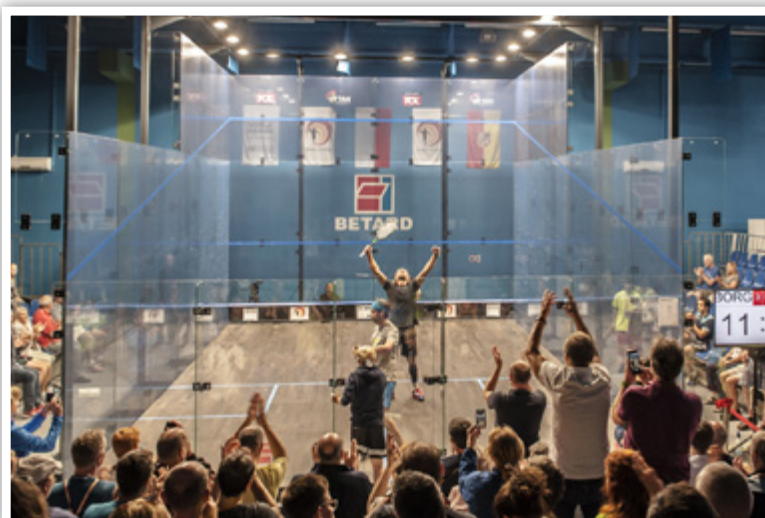
8. WSF CHAMPIONSHIP SQUASH VENUE

- All matches will be played at Hasta La Vista Squash Club in Wrocław – where there are 32 courts plus 1 glass court.
- All courts comply with WSF court specifications.
- Food and beverages will be available at Hasta La Vista.
- The Club also has 4 saunas and a Jacuzzi, 8 tables for table tennis, a well-equipped gym, 3 fitness rooms, 10 badminton courts, spacious car park, well equipped pro-shop with racquet stringing service on site.
- The venue has recently been enlarged so there are new entrance space, reception desk, spacious lobby, offices, restaurant, coffee spot.



9. WSF PLAYER REGISTRATION

- **Register:** All players must register for the Championship before playing their first match.
- **Registration Desk:** This will be located in the lobby at Hasta La Vista – where players can register anytime between 08:00hrs – 20:00hrs on Friday 19 August – Sunday 21 August. Please be aware that due to number of entrants, queues may appear during registration.
- **Championship Bag:** On registration all players will receive a Championship welcome bag with a Championship T-Shirt, Championship Programme and various samples from our sponsors.



10. CHAMPIONSHIP ACCOMMODATION

Please see the [BETARD WSF World Masters Championship Website](#) for detailed information on Accommodation in Wrocław which has been suggested by Hasta La Vista Sports Centre. The website contains all details on prices, payment policy, cancellation and direct links to book your preferred accommodation for the BETARD WSF World Masters Championships.

The Accommodation has been divided into 3 categories:

1. Hotels with Transport provided

Hasta La Vista provides transportation to and from all hotels in this group. The pick-up point can be found either in front of the hotel entrance or in walking distance of the hotel.

2. Hotels in walking distance from Hasta La Vista

Just a short walk (couple of minutes) away from Hasta La Vista.

3. Hotels in Wrocław Old Town

Located in the beautiful Wrocław Old Town and a longer distance away from Hasta La Vista. Please note: Transport is not organised by Hasta La Vista from these hotels.



11. CHAMPIONSHIP FUNCTIONS

Four official functions will be held during BETARD WSF World Squash Masters Championships.

All of the official functions will have a limited number of places available and registration must take place before the Championships registration deadline of Sunday 10 July 2022.

Participants may book places for non-playing companions or spouses in advance (at the time of registration). Hasta La Vista will not be able to accept late sign-ups or walk-ins for any of the functions during the week of the event, therefore if you wish to attend any of the functions, please ensure you book these in advance when completing your on-line registration.

FUNCTION 1 - MEET AND GREET*. Welcome Reception.

DATE:	20/08/2022
TIME:	18:00hrs – 22:00hrs
LOCATION:	Hasta La Vista Sport Center, ul. Góralska 5, 53-610 Wrocław
DETAILS:	Available on website https://wsfworldmasters.com/
BOOKING AND PAYMENT:	via Tournament Software
COST TAX INCLUDED:	20 USD / person



(*the event will be cancelled in case of insufficient interest)

FUNCTION 2 - OPENING CEREMONY

DATE:	21/08/2022
TIME:	19:00hrs – 24:00hrs
LOCATION:	Hotel Novotel Wrocław Centrum, ul. Powstańców Śląskich 7-7b, Wrocław
DETAILS:	Available on website https://wsfworldmasters.com/
BOOKING:	via Tournament Software
COST TAX INCLUDED:	54 USD / person



FUNCTION 3 - PLAYERS PARTY

DATE:	24/08/2022
TIME:	20:00hrs – 03:00hrs
LOCATION:	Hotel Wodnik, ul. Na Grobli 28, 50-421 Wrocław
DETAILS:	Available on website https://wsfworldmasters.com/
BOOKING:	via Tournament Software
COST TAX INCLUDED:	54 USD / person

(*the event will be cancelled in case of insufficient interest)

FUNCTION 4 - MEDAL CEREMONY

DATE:	27/08/2022
TIME:	TBC
LOCATION:	Hasta La Vista Sport Center, ul. Góralska 5, 53-610 Wrocław
DETAILS:	Available on website https://wsfworldmasters.com/

FUNCTION 5 - CLOSING CEREMONY

DATE:	27/08/2022
TIME	20:00hrs – 03:00hrs
LOCATION:	Topacz Castle, ul. Główna 12, 55-040 Ślęza
DETAILS:	Available on website https://wsfworldmasters.com/
BOOKING:	online via Tournament Software
COST TAX INCLUDED:	76 USD / person



For more detailed and up to date information on the official functions please visit the [FUNCTION](#) page on the Championship website.

2. CHAMPIONSHIP TRANSPORTATION

The shuttle bus service will help players get to and from the club/hotel throughout the whole Championship (19-27.08.2022). There will be two bus lines in the loop.

Here's a complete list of tournament hotels with transportation and pick up points provided by Hasta La Vista:

First line covers 3 hotels:

[Novotel Wrocław Centrum****](#)

[Hotel Ibis Centrum ***](#)

[Q Hotel Plus Wrocław****](#)

There are two pick up points for this line. One located next to Novotel Wrocław Centrum & Ibis Centrum hotels (ul. Powstańców Śląskich 7, 55-332 Wrocław) and one next to Q Hotel Plus Wrocław (ul. Zaołziańska 2, 53-334 Wrocław).

Second line covers 2 hotels:

[IBIS Styles***](#)

[Scandic Wrocław****](#)

Pick up point is located next to both of those hotels.

The shuttle bus service must be booked in advance when completing your online entry for the championship (via Tournament Software). Cost: 55 USD/ player.

This cost is also applicable for any accompanying guests.

The shuttle bus service will be arranged only from hotels listed above. Please bear this in mind when booking your accommodation for the BETARD WSF World Masters Championships.



13. CHAMPIONSHIP PRACTICE COURTS

Championship Practice: Times available for practice courts are included under Section 4.

19 – 20 August 2022:

- 15 courts will be available for Practice (including all glass court and semi glass court) for players exclusive use from 08:00hrs to 20:00hrs.
- Courts can be booked 3 months in advance via squash_masters@hastalavista.pl
- Training session can last 30 minutes per person.

21 – 27 August 2022:

- On these days all the event courts* will work as practice ones from 08:00hrs to 09:30hrs
- Later in the day and in the evenings practice courts can be used free of charge if not used for matches and not pre-booked by centre users.
- Practice courts, at the days of play, cannot be booked in advance but can be reserved at the squash desk on arrival at Hasta La Vista if available.
- The exception is the use of the all glass court (only during the days of play). The host will run bookings for practice sessions on the all glass court. Practice sessions on this court will be for a duration of 15 minutes per person. The bookings will be available 1 day in advance at the Championship office. The players whose matches are scheduled that day on the All Glass Court will take priority.

14. CHAMPIONSHIP WEBSITE

The Championship website should be the principal source of information for the event. Links to other sites that may be of interest to you are provided for player convenience. The event organisers, the host venues, the sponsors, Polish Squash and the WSF are not endorsing, sponsoring, or recommending such sites or the materials disseminated by or services provided by them, and are not responsible for the information, services, or other materials at any other site. The user is solely responsible for the payment of all fees incurred with such service providers, including without limitation reservation fees, room charges, food and entertainment expenses, travel charges, and cancellation fees.

Please exercise appropriate care while browsing the Internet and using the Site. While you are using the Site, be aware that you could be directed to other sites that are beyond the control of

the event organisers, the host venues, the sponsors, Polish Squash and the WSF. For example, if you click on a banner advertisement or a search result, you may be directed away from the Site. These other sites may send their own cookies to users, collect data, solicit personal information, or contain information that you may find inappropriate or offensive.

Please keep in mind that whenever you give out information online, that information can be collected and used by people you don't know. The event organisers, the host venues, the sponsors, Polish Squash and the WSF cannot guarantee the security of any information you disclose online; you make such disclosures at your own risk.

If you choose to leave the Site via links to other sites, including those of advertisers, the event organisers, the host venues, the sponsors, Polish Squash and the WSF is not responsible for the privacy policies of those sites or the cookies those sites use. In addition, because they have no control over such sites and resources, you acknowledge and agree that they are not responsible for the availability of such external sites or resources, and does not endorse and is not responsible or liable for any content, advertising, products, or other materials on or available from such sites or resources.

15. CHAMPIONSHIP ENTRY FEES

There is no "Early Bird" Entry Fee for this event.

The "Standard" Entry Fee is 135 USD per player (TAX INCLUDED, this does not include any of the functions or transport – these are add-ons)

As the **Official Functions have a limited number of spaces**, we do encourage you to sign up early.

Championship Add-Ons (TAX INCLUDED):

Meet & Greet Welcome Reception	20 USD per person
Opening Ceremony	54 USD per person
Players Party	54 USD per person
Closing Ceremony	76 USD per person
Transportation (from 19-27 August) Shuttle bus service between official hotels and club be busy so please can players be patient if there is a wait.	55 USD per person

16. CHAMPIONSHIP ENTRY PROCEDURE

Entries and Function/Transport Add-ons must be booked using WSF Tournament Software via this weblink– <https://wsf.tournamentsoftware.com/sport/tournament?id=7580B36F-85DC-4E85-B587-98B253C9CAAE>

All entrants are required to have an activated SPIN (Squash Personal Identification Number), which can be secured at <http://www.worldsquash.org/spins/>

Payments must be made using the on-line WSF Tournament Software system, at the time of entry.

An automated payment confirmation will be emailed to you once payment has been successful. This is your proof of entry. Should you not receive a payment confirmation, please contact the organisers at squash_masters@hastalavista.pl

Please note all Functions/Transport Add-ons have a limited number of spaces and should be booked at the time of entry.

If you do forget to book these, contact the organiser at squash_masters@hastalavista.pl, this will be depend on ticket availability.

Entries will close on Sunday 10 July 2022 at 23:59GMT

Entry fees, function fees and transport are non-refundable after the closing of entries on Sunday 10 July 2022 at 23:59GMT

Prior to the closing date, refunds of entry fees function fees and transport will be made less a 25% administration fee, provided the request is made by the player by email or in writing and is received by the closing date.

It is the player's responsibility to check that their entry has been received before the closing date. No responsibility can be taken by the Championship organisers for entries not received.

All flights, car rental, hotel bookings, tour reservations and excursions are made between the participant and appropriate agent and as a result the participant is solely responsible for the payment of all fees incurred with such service providers, including without limitation reservation fees, room charges, food and entertainment expenses, travel charges, and cancellation fees.

17. PLAYERS RESPONSIBILITIES

All non-European entrants are advised to check if they require a visa to enter Poland and to apply for the appropriate travel documentation well in advance of the Championship dates.

All players enter and compete in the BETARD WSF World Masters Championships at their own risk. The event organisers, the host venues, the sponsors, Polish Squash and the WSF accept no liability whatsoever for injury or loss arising from participation in the Championships. It is strongly recommended that all participants take out suitable insurance to cover themselves in the event of injury, loss, illness or accident.

Players who book tickets on behalf of non-players do so at their own risk. The event organisers, the sponsors, Polish Squash and the WSF accept no liability whatsoever for injury or loss incurred by a non-player arising from their presence at any of the functions, the venues or from using the tournament transport.

18. DECLARATION

By participating in the BETARD WSF World Masters Championships 2022 you are declaring the following:

1. that the National Federation which you are eligible to represent is a Full or Associate Member of the World Squash Federation (WSF) and that you conform to the age requirement (which may be verified in accordance with the Regulations) and have a SPIN (refer to section 17 above);
2. that you are aware of the WSF World Championship Regulations that govern this

Championship and hereby agree to abide by all such Rules and Regulations;

3. that you have read this Championship Information document and accept all the conditions contained therein;
4. that you shall participate at your own risk and not hold the organisers, the sponsors, the host association or the WSF responsible for any loss, injury, disability or death arising from such participation;
5. that you understand that anti-doping tests will be carried out on any or all players at any time from arrival until departure and accept and undertake to abide by the current WSF Anti-Doping Rules, and that you, as a member of your WSF Member Nation hereby declare as follows:

- a. that you shall comply with and be bound by all of the provisions of the WSF Anti- Doping Rules, including but not limited to, all amendments to the Anti-Doping Rules and all International Standards as issued by the World Anti-Doping Agency and permanently published on its website.
 - b. you acknowledge that PSA, WSF Member Nations and National Anti-Doping Organisations have jurisdiction to impose sanctions as provided in the WSF Anti- Doping Rules.
 - c. you acknowledge and agree that any dispute arising out of a decision made pursuant to the WSF Anti-Doping Rules, after exhaustion of the process expressly provided for in the WSF Anti-Doping Rules, may be appealed exclusively as provided in Article 13 of the WSF Anti-Doping Rules to an appellate body for final and binding arbitration, which in the case of International-Level Athletes is the Court of Arbitration for Sport (CAS).
 - d. you acknowledge and agree that the decisions of the arbitral appellate body referenced above shall be final and enforceable, and that I will not bring any claim, arbitration, lawsuit or litigation in any other court or tribunal.
6. That you have read, understood and accept this declaration.

19.ANTI-DOPING – PRESCRIBED MEDICINE

If you are taking any prescribed medicines that are on the Anti-Doping Prohibited List you **MUST** apply for a Therapeutic Use Exemption (TUE) in advance.

**WORLD
SQUASH**

WSF



WORLD MASTERS NO.1 BALL



PRO PLAYERS

The Pro squash ball has the lowest bounce of all four balls in the range. Suitable for advanced players.

HANGTIME STANDARD



COMPETITION PLAYERS

The Competition squash ball is the same size as the Pro but has a 10% longer hang time. Suitable for intermediate players.

HANGTIME +10%



PROGRESS PLAYERS

The Progress squash ball is 6% larger and has a 20% longer hang time than the Pro. Suitable for improver players.

HANGTIME +20%



INTRO PLAYERS

The Intro squash ball is 12% larger and has a 40% longer hang time than the Pro. Suitable for beginner players.

HANGTIME +40%

A BALL FOR EVERY PLAYER

NICK MATTHEW, EX-WORLD NO. 1*,
PLAYS WITH THE EVOLUTION PRO
RACKET AND THE DUNLOP
PRO SQUASH BALL.

DUNLOPSPORTS.COM

WORLD
SQUASH

WSF

OFFICIAL
BALL OF THE
WSF WORLD
MASTERS

OFFICIAL BALL

